



Surrey Hockey Association

Junior Development Centres

U13 to U15

Coach & Volunteer

Information Pack



Content List

Section	Title	Page
1	Brief Background	3
2	JAC Selection	3
3	JDC Format	4
4	Dates and Venues	4
5	JDC Coach Applications	7
6	JDC Coach Inductions	7
7	JDC Staffing Structure	8
8	JDC Centre Managers	10
9	Foundation Skills Workshops	11
10	Integrating Goalkeepers into Your Coaching Sessions workshops	11
11	Key Personnel & Contacts	12
12	JRPC Players	12
13	Communication	13

Please note that details of the U16 and U17 programmes will follow shortly. However, for your reference the draft dates for these are as follows:

- Sunday 05 September, 2010
- Sunday 12 September, 2010
- Sunday 26 September, 2010
- Sunday 10 October, 2010 (Competition)
- Sunday 31 October, 2010 (Competition)

In addition, there will be a Goalkeeper Assessment which is scheduled to be held on 05 November.

Further details of each of the above will be sent to you shortly.



1. Brief Background

The Junior Development Centre (JDC) is the first step on England Hockey Board's (EHB) Single System which eventually leads to the national age group squad.

The JDC is aimed at those talented and promising players, both boys and girls, at each age group. There are two phases:

- Training
- Competition

In the training phase the emphasis is on high-quality training in small groups, enabling the coach to have more individual contact time than is possible in a standard club or school environment. This phase will consist of 5 two hour training sessions, each of which will end with small games.

The competition phase will be at least one full game play session and culminate in selection to the Junior Academy Centre (JAC) from where the County team is selected. All JDC participants will be invited to the first session in this phase. Where there is more than one session, then some degree of selection may take place after each session.

Our aim is to arrive at a JAC squad of roughly 25. The South region is discussing whether to run an additional, development team at U13 and U14. A final decision is unlikely before late summer. If we have two teams then we will select a squad of around 32.

2. JAC Selection

Except in exceptional circumstances (such as long term injury), selection for the JAC or JAC Assessment Day will be dependent solely on performance at the JDC sessions.

Assessments scores will be given for each session. These will then be aggregated. Additional weighting may be given to some sessions, in particular to the game play sessions and to drills that concentrate on skills particularly relevant to where the player plays on pitch.

If the second team at U13 and U14 is run it will be very much a developmental team. Consequently some of the places in the training squad may be given to those showing outstanding promise.

At U15 Level there will be an additional Assessment Day where those who attended the regional centres will be cross-assessed with those from the JDC.



3 JDC Format

At U13 to U15 the main training phase will be on weekends in June and July. There will be three centres:

- Guildford Hockey Club (Broadwater School) and one venue for 27 June (to be announced)
- Richmond Hockey Club (University of Westminster)
- Warlingham School

Players will attend one of these. Places will be allocated on a first come, first served basis.

For U13 & U14 we are also piloting a JDC running along similar lines to a holiday camp from 25 to 27 August. This camp is an alternative to the term-time JDC rather than an addition to it.

Goalkeepers will be provided with separate, specialist training for part of each session. Though they will join with the outfield players for certain exercises and the game play sessions.

Players who play both on field and in goal must decide whether they wish to attend the JDC as an outfield player or a goalkeeper as it is not practical to swap midway through a session.

4 Dates and Venues

Term Time JDCs

We are offering JDCs at three venues:

- Surrey East: Warlingham School
- Surrey South: Guildford HC (Broadwater School) (except 27 June when it will be at an alternative venue)
- Surrey North: Richmond HC (University of Westminster)

The Competition venues will be set once the senior Sunday fixture list has been issued in June as it will affect pitch availability. All players in an age group from each of the three venues and the holiday camp JDC will attend their Competition session(s) at the same venue.



Under 13 (Term-time)

<u>Date</u>	<u>Session</u>	<u>North</u>	<u>South</u>	<u>East</u>
Sun 13 Jun	Coaching 1	13:00-15:00	10:00-12:00	10:00-12:00
Sat 19 Jun	Coaching 2	10:00-12:00	10:00-12:00	10:00-12:00
Sun 27 Jun	Coaching 3	10:00-12:00	10:00-12:00**	12:30-14:30
Sun 11 Jul	Coaching 4	10:00-12:00	10:00-12:00	10:00-12:00
Sun 18 Jul	Coaching 5	10:00-12:00	10:00-12:00	12:30-14:30
Sun 12 Sep	Competition 1 (for all participants)	tba	tba	tba
Sun 26 Sep	Competition 2 (by invitation)	tba	tba	tba

Under 14 (Term-time)

<u>Date</u>	<u>Session</u>	<u>North</u>	<u>South</u>	<u>East</u>
Sun 13 Jun	Coaching 1	14:45-16:45	12:45-14:45	12:45-14:45
Sat 19 Jun	Coaching 2	12:45-14:45	12:45-14:45	12:45-14:45
Sun 27 Jun	Coaching 3	12:45-14:45	12:45-14:45**	15:00-17:00
Sun 11 Jul	Coaching 4	12:45-14:45	12:45-14:45	12:45-14:45
Sun 18 Jul	Coaching 5	12:45-14:45	12:45-14:45	15:00-17:00
Sun 12 Sep	Competition 1 (for all participants)	tba	tba	tba
Sun 26 Sep	Competition 2 (by invitation)	tba	tba	tba

Under 15 (Term-time)

<u>Date</u>	<u>Session</u>	<u>North</u>	<u>South</u>	<u>East</u>
Sun 13 Jun	Coaching 1	17:30-19:30	15:30-17:30	15:30-17:30
Sat 19 Jun	Coaching 2	15:30-17:30	15:30-17:30	15:30-17:30
Sun 27 Jun	Coaching 3	15:30-17:30	15:30-17:30	17:30-19:30
Sun 11 Jul	Coaching 4	15:30-17:30	15:30-17:30	15:30-17:30
Sun 18 Jul	Coaching 5	15:30-17:30	15:30-17:30	17:30-19:30
Sun 10 Oct	Competition 1 (for all participants)	tba	tba	tba
tba	JAC Assessment Day (by invitation)	tba	tba	tba

** = session likely to be at Cranleigh School.



Holiday Camp JDC

This is an experimental addition to the schedule this year. It will only run subject to demand and at Surbiton HC only. Places will be allocated on a first-come first served basis. The format of the days is:

Days 1 & 2

09:30	Registration
10:00	Coaching Session
12:00	Seminar
12:45	Lunch
13:30	Coaching Session
15:30	End

Day 3

09:30	Registration
10:00	Coaching Session
12:00	Lunch
13:00	Mini-tournament
15:00	End

Due to the seminars and the tournament on the third day, the Holiday Camp will be more expensive than the term-time course. Lunch is not included in the price.

The Competition venues will be set once the senior Sunday fixture list has been issued in June as it will affect pitch availability. At these sessions the camp participants will join with those from the term-time JDCs.

<u>Date</u>	<u>Session</u>	<u>U13</u>	<u>U14</u>
25 Aug	Coaching 1 & 2	10:00-15:30	10:00-15:30
26 Aug	Coaching 3 & 4	10:00-15:30	10:00-15:30
27 Aug	Coaching 5 & Tournament	10:00-15:00	10:00-15:00
12 Sep	Competition 1 (for all participants)	tba	tba
26 Sep	Competition 2 (by invitation)	tba	tba

Venues *(includes venues for the training phase and the likely venues for the competition phase)*

<u>Venue</u>	<u>Postcode</u>	<u>Address</u>
Cranleigh School	GU6 8QD	Horseshoe Lane, Cranleigh
Guildford	GU7 3BW	Broadwater School, Summer Road, Godalming
Old Cranleighan	KT7 0HB	Portsmouth Road, Thames Ditton
Purley Walcountian	SM7 3HU	Carshalton Road, Woodmansterne
Reed's School	KT11 2ES	Sandy Lane, Cobham
Richmond	W4 3UH	Hartington Road, Chiswick
Surbiton	KT7 0AE	Sugden Road, Thames Ditton
Warlingham School	CR6 9YB	Tithe Pit Shaw Lane, Warlingham
Woking	GU21 3RT	Wishbone Way, Goldsworth Park, Woking



5 JDC Coach Applications

If you would like to be considered for one of the Surrey JDC coaching roles, please complete the Volunteer Application Form and Availability Form, and return them preferably via e-mail to development@surreyhockey.com or otherwise by post to:

Mark Atherton, Flat 10, Purley Heights, 124 High Street, Purley, Surrey, CR8 2AD.

You will then receive an e-mail advising whether your application has been successful, along with further details about your role, the programme and the syllabus.

6 JDC Coach Inductions

Later in this pack you will see details of two Foundation Skills workshops to be held on 3 and 8 June, at Surbiton HC and Purley Walcountians HC. For those attending one of these courses and able to arrive early (or alternatively at the Surbiton course stay late), we will additionally run a one hour JDC Coach Induction.

In the inductions, you will be advised about the structure and format of the sessions, the support you can expect throughout the programme, coach education and development opportunities, and assessment criteria and scoring. You will of course have time to ask any questions you may have and will receive an Induction Pack to take home.

For those unable to attend either of the Foundation Skills workshops there will also be three Induction sessions held at Surbiton HC on Friday 11 June.

The dates, times and venues for the different induction sessions are therefore as follows:

Thursday 03 June, 2010	18:00 – 19:00	Surbiton Hockey Club
Thursday 03 June, 2010	21:30 – 22:30	Surbiton Hockey Club
Tuesday 08 June, 2010	18:00 – 19:00	Purley Walcountians Hockey Club
Friday 11 June, 2010	16:00 – 17:00	Surbiton Hockey Club
Friday 11 June, 2010	17:30 – 18:30	Surbiton Hockey Club
Friday 11 June, 2010	19:00 – 20:00	Surbiton Hockey Club

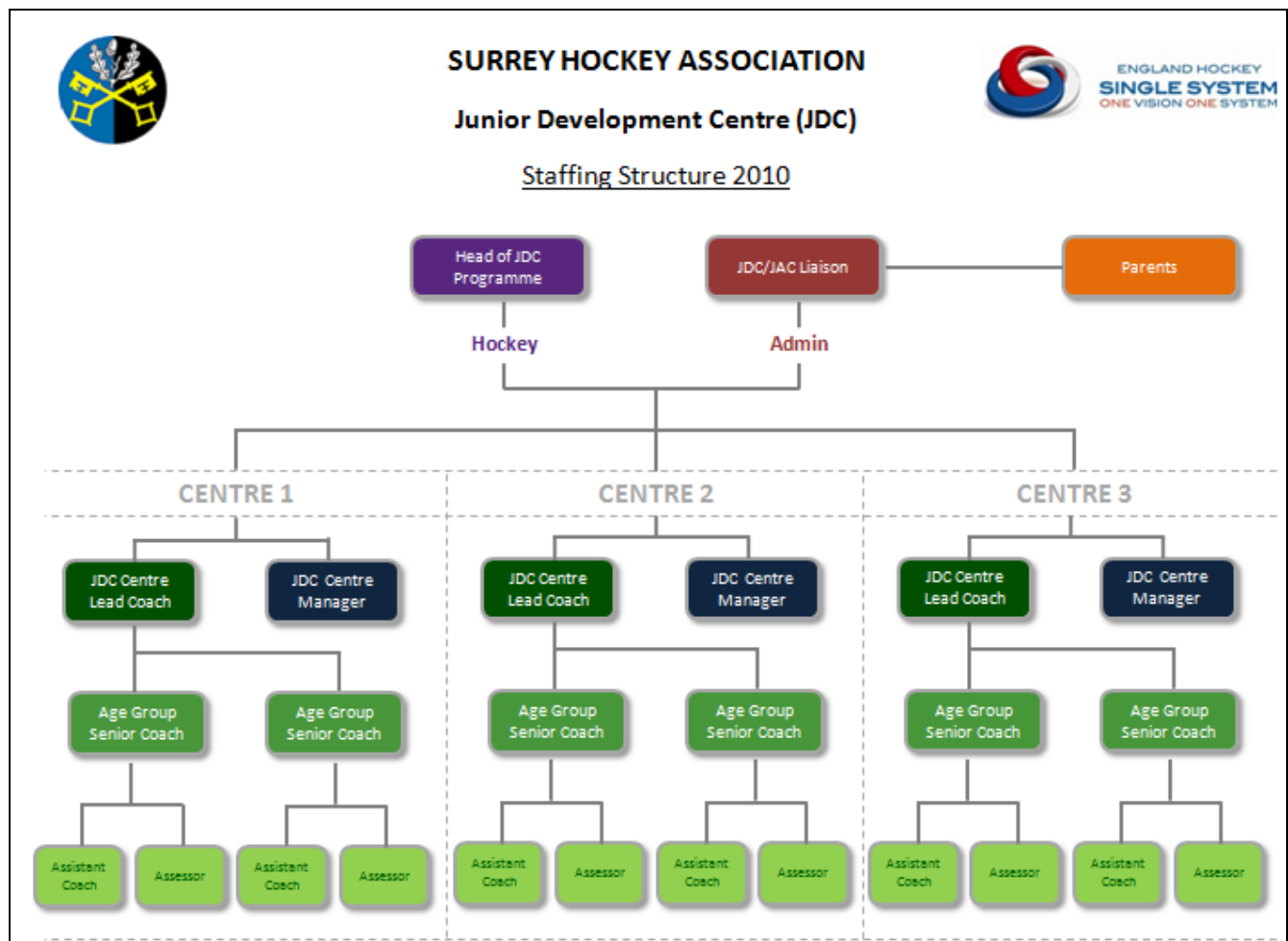


7 JDC Staffing Structure

To ensure the safe and effective delivery of the JDC programme, allow for coach education/development opportunities and to enhance the quality of feedback to JDC participants, we have devised a new staffing structure to support and deliver the 2010 JDC Programme. This structure aims to provide clearly defined roles and coach education opportunities, reporting lines for welfare issues and programme development, and a pathway for young or less experienced coaches.

Coaching teams will be aligned to age groups, to ensure:

- Full staffing of all JDC sessions.
- Consistency of coaching delivery throughout the programme.
- Transparency and consistency of assessments.
- A clear process for feedback to coaches, and mentoring/development opportunities.



N.B. An U14 age group coach, for example, may work at different centres on different days, but will stay with that age group whichever venue they are working at. Coaches may work with more than one age group.



The primary roles and responsibilities for each position are set out as follows:

Head of JDC Programme

- To be responsible for and implement a well-structured and progressive coaching programme for the JDCs, in line with EHB's coaching programme.
- To lead the coach induction sessions and hold 'on pitch skills session' if required.
- To effectively supervise, provide coach feedback, mentor and direct support staff, and volunteers, where appropriate.
- To lead the Talent Identification Process and oversee all assessments and selections to the JAC squads.

Lead Coach (one or per age group and centre)

- Responsible for the overall delivery of the JDC syllabus and the assessment/selection process for their centre.
- To lead a team of senior and assistant coaches, and assessors, and to work with the goalkeeping coaches, providing feedback and mentoring where required.
- To meet with senior coaches following their assessment discussions, to agree final session scores for each participant and to handle any disputes or concerns.
- To deal with any accidents, incidents or emergencies that arise at the JDC.

Senior Coach (aligned to a specific age group one per session)

- Responsible for the delivery of the JDC syllabus and the assessment/selection process for a specific age group.
- To lead a team of assistant coaches and assessors, and to work with the goalkeeping coaches, providing feedback and mentoring where required.
- To lead the assessment discussions for that age group.

Assistant Coaches & Assessors

- Clearly defined roles to allow assistant coaches to help with the delivery of the JDC syllabus, with assessors focussing purely on Talent Identification and post-selection feedback.

JDC Centre Manager

- To be responsible for and handle on-site logistical operations for the JDC Centre (including management of registrations, kit and equipment, supervision of the host facility, etc).



Other Roles

- JDC Staff will additionally be supported by the JDC/JAC Liaison Officer, who is responsible for all administration relating to the JDC programme and the county Welfare Officer, who can be contacted directly by any member of the JDC Team.

8 JDC Centre Managers (voluntary role)

We are also looking for volunteers (ideally parents – not necessarily hockey players but ‘good organisers’) to act as Centre Managers for each of the JDC venues. Their role will be to run the registration desk, distribute copies of the coaching syllabus and assessments forms (which will be provided to them by the Head of the JDC Programme) and act as a central point of contact on the day for non-hockey matters.

This role is a crucial one, as it frees up the coaching staff to hold more detailed assessment discussions (from which qualitative as well as quantitative feedback will be compiled for participants). The role is a voluntary one to keep the cost of the programme down as much as possible.

If you would be interested or know anyone else who may be interested in applying, please e-mail development@surreyhockey.com for further information.

JDC Centre Managers will be invited to attend an Induction Meeting, details of which will be sent to them, once the roles have been filled.



9 Foundation Skills Workshops

England Hockey's "Foundation Skills" (which have replaced the Core Skills) are the technical elements of the game that underpin player development within EHB's Single System. We are holding two courses, which are **free of charge** to JDC Coaches (details as follows):

Thursday 03 June, 2010	Surbiton Hockey Club	19:00 – 21:30
Tuesday 08 June, 2010	Purley Walcountians Hockey Club	19:00 – 21:30

Whilst it is not compulsory to attend, we would strongly encourage it for those that are available to get to one of these workshops. A poster providing further details and an application form are attached. Please return the latter to development@surreyhockey.com. A confirmation e-mail will be sent to you, along with directions to the venue.

The course is not exclusively for JDC coaches, however. If you know of any other coaches, teachers and/or volunteers who might like to attend the course, please ask them to e-mail a completed application form (attached) to development@surreyhockey.com.

The fee for non-JDC coaches will be £15 each, which covers the cost of the course tutors.

10 Integrating Goalkeepers into Your Coaching Sessions Workshops

We are also planning to hold two additional courses, led by our Head Goalkeeping Coach, "Hems," which aim to provide guidance on how to integrate goalkeepers into your coaching sessions. These workshops, which will be offered to JDC coaches **free of charge**, will provide you with hints and tips on how to coach some of the technical aspects of goalkeeping and how to adapt your drills to give a real focus for the goalkeepers (i.e. not just use them as cannon fodder or worse still, forget about them!). Details of the dates, times and venues will follow shortly, but we anticipate one being at the end of June and one mid-September.



11 Key Personnel and Contacts

JDC/JAC Liaison	Tony Hilton	020 8680 3681	surreyha@aol.com
Head Coach	Mark Atherton	07858 293987	development@surreyhockey.com
Welfare Officer	Sarah White	01372 818512	andysarah.white@ntlworld.com

Tony handles the general administration and all contact with the parents/players.

Mark handles all hockey related matters including co-ordinating coaches and writing the syllabus.

Sarah is in charge of all welfare matters. Please contact her if you have any child welfare issue. If an issue needs sorting out on the day of an event please approach any member of the staff on site.

12 JRPC Players

Those players attending the Junior Regional Performance Centres (JRPCs) do not need to attend the JDCs. They will be invited to attend an Assessment Day at the start of the JAC process for selection to the JAC. Attendance at the JDC will not increase their chance of selection to the JAC.

The current recommendation from the England Hockey Board is that they should not attend a JDC. Though there are some who will want to do both - unless the direction from England Hockey changes, Surrey will accept all JRPC players who wish to attend. In 2009 about 10% of Surrey players chose to attend the JDC as well.



13 Communication

Further information will be posted on the county's website www.surreyha.com where a fuller description of England Hockey's Single System is also available.

Please encourage players and parents to visit the website for any updates to the programme. To get directly to the JDC section on the site, go to <http://surreyha.com/SurreyJDC.aspx> and click on the links at the top of the page for the schedules and venue details.

Those appointed as JDC Coaches will also be given access to a secured and dedicated JDC Coaching Zone section on the website. This will host the following types of information:

- Coach Claim forms
- Policies and Child Protection Statements
- Incident Report Forms
- Selection Policy Guidelines
- Disciplinary and Appeals Policies
- JDC Coaching Syllabus